

Medical Electives and Research Activities

Emad Magdy Shawky, MD

Lecturer of Nephrology

Head of the Elective Training and Student Research Committee

الدورة التدريبية لبرنامج المنصورة هانتسستر
للتعليم الطبي



2021
-
2022

Mansoura Manchester Program
for Medical Education

Research Basics



Final Year clinical Training



Elective Courses

It's time to select your courses for next year!



Annual Grants



- ❑ Online/In-Campus courses
- ❑ 39 Courses last academic year
- ❑ 48 Courses in the upcoming Year
- ❑ Divided between
 - Phase 1: Year 1,2
 - Phase 2: Year 3,4

Marks are Targeted to the student activities and interaction

- Not more than 40% lectures
- 30% interactive sessions, Flipped classrooms
- 30% student assignments

Elective Courses

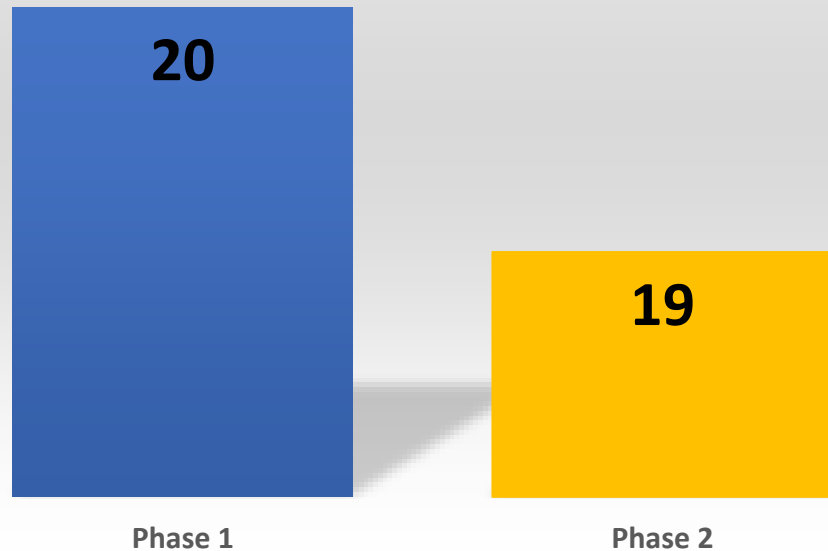
It's time to select your courses for next year!



Online Booking which guarantee the Equality

General data

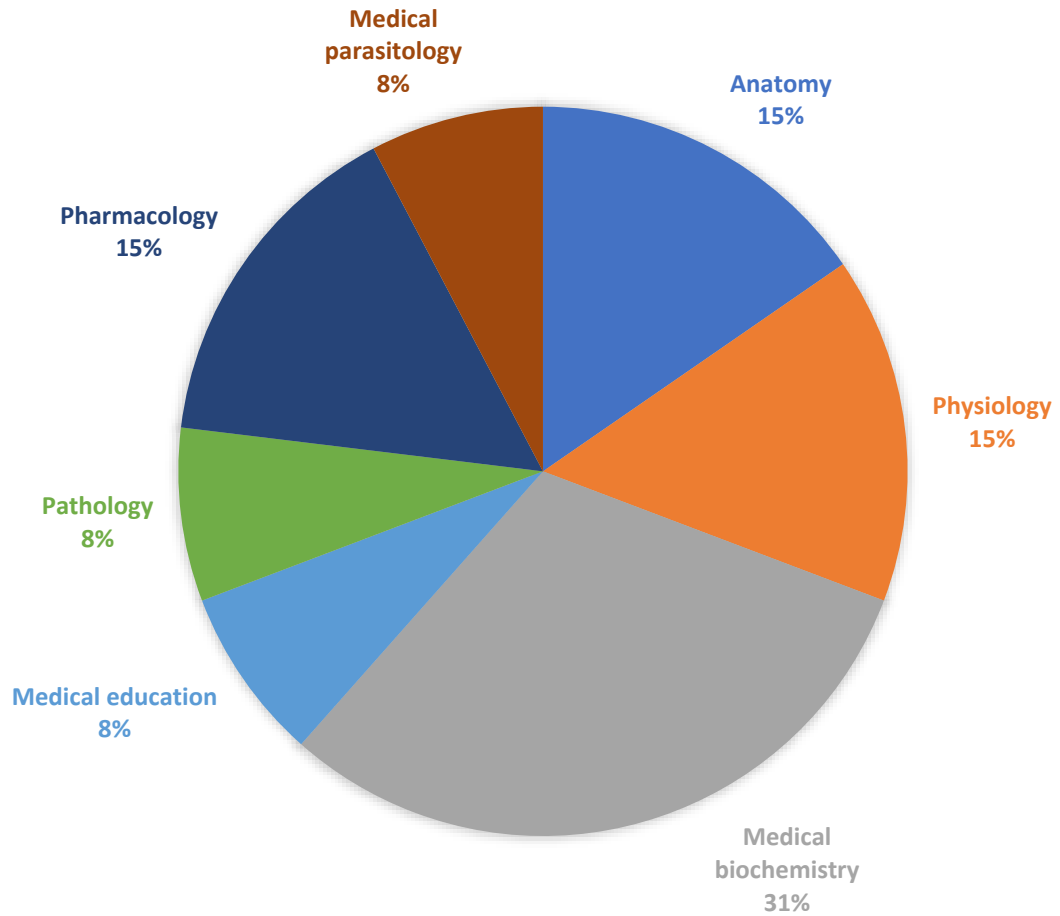
No. of elective courses/phase



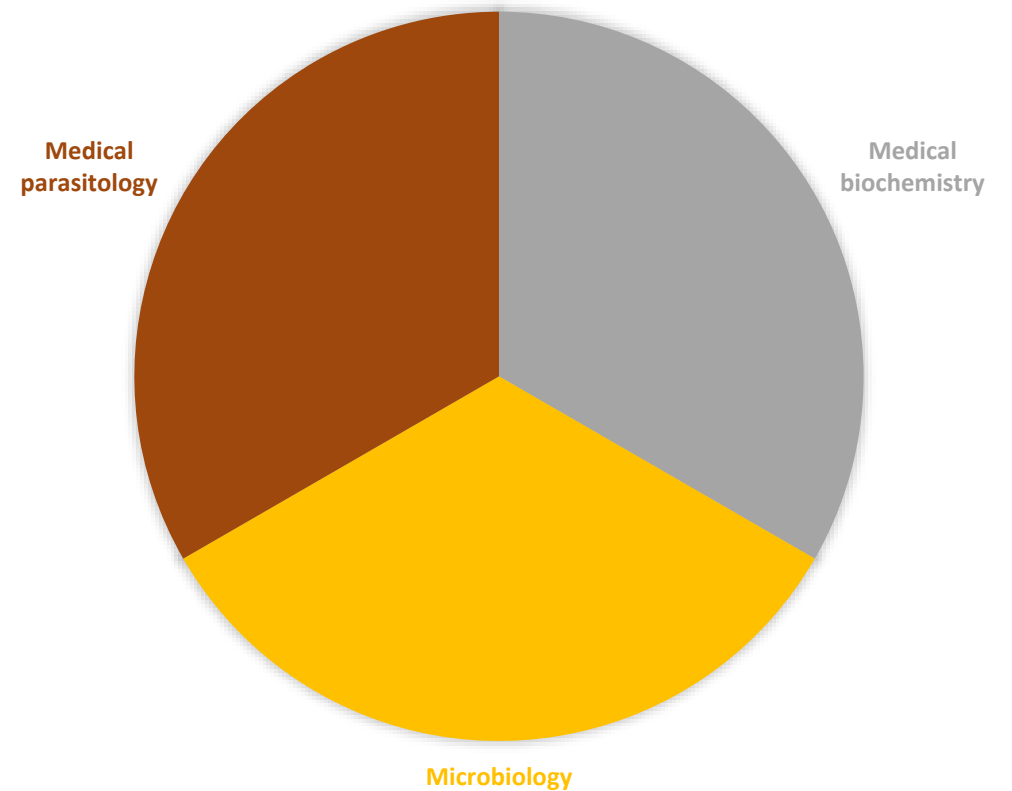
	Phase 1	Phase 2
Total no. of coordinators	20	19
Total no. of tutors	50	59
Total no. of teaching hours/course	14h	18h
Average no. of assignments/course	3	3

Department participation

PHASE 1
ACADEMIC DEPARTMENTS

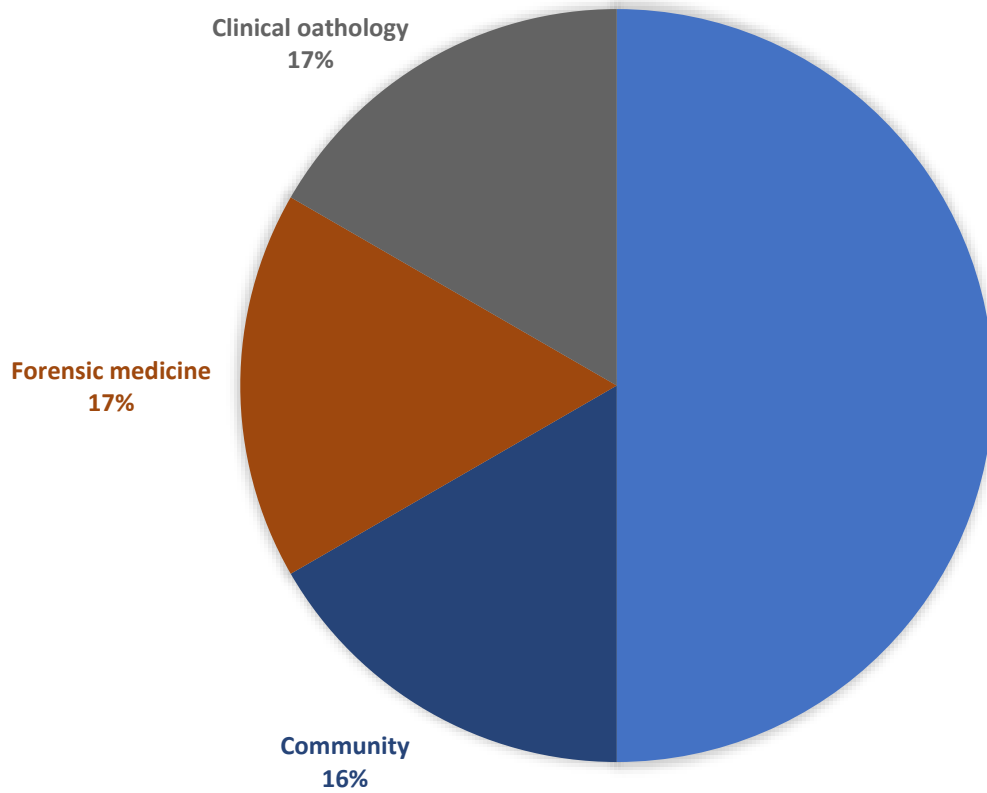


PHASE 2
ACADEMIC DEPARTMENTS

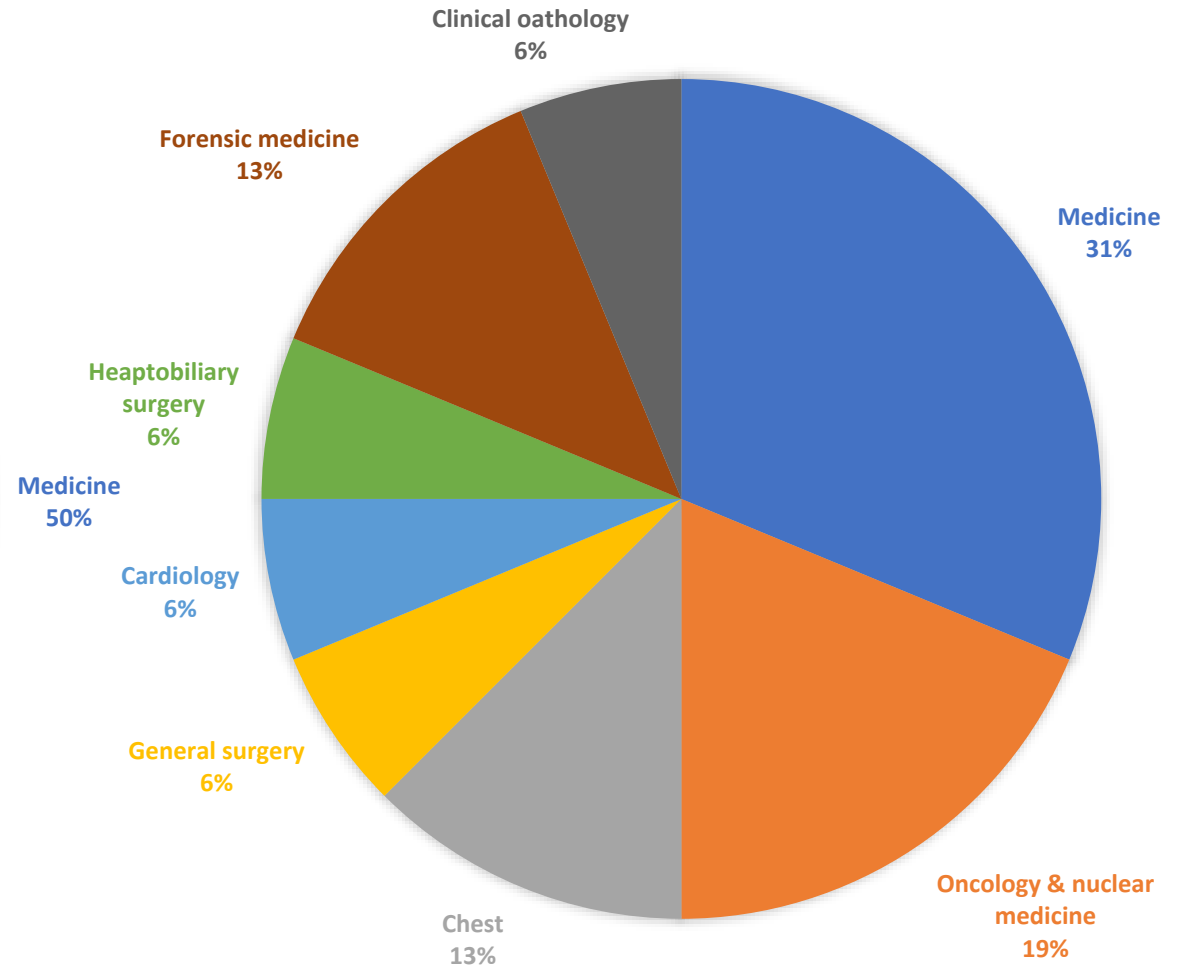


Department participation

PHASE 1
CLINICAL DEPARTMENTS

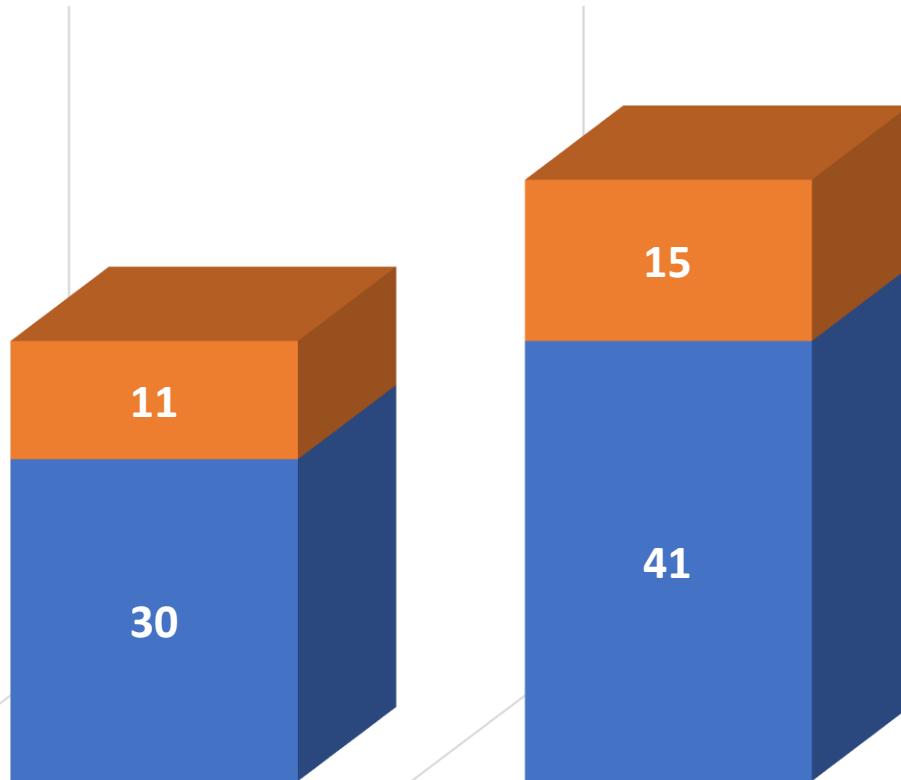


PHASE 2
CLINICAL DEPARTMENTS



Student participation

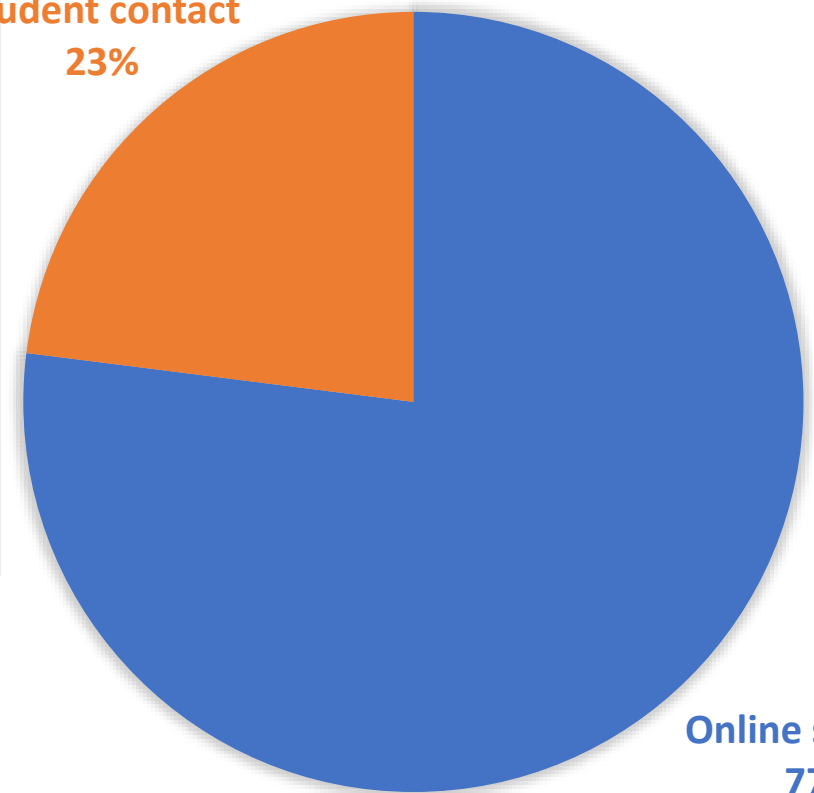
■ Phase 1 ■ Phase 2



MEAN OF STUDENT
ATTENDANCE/SESSION

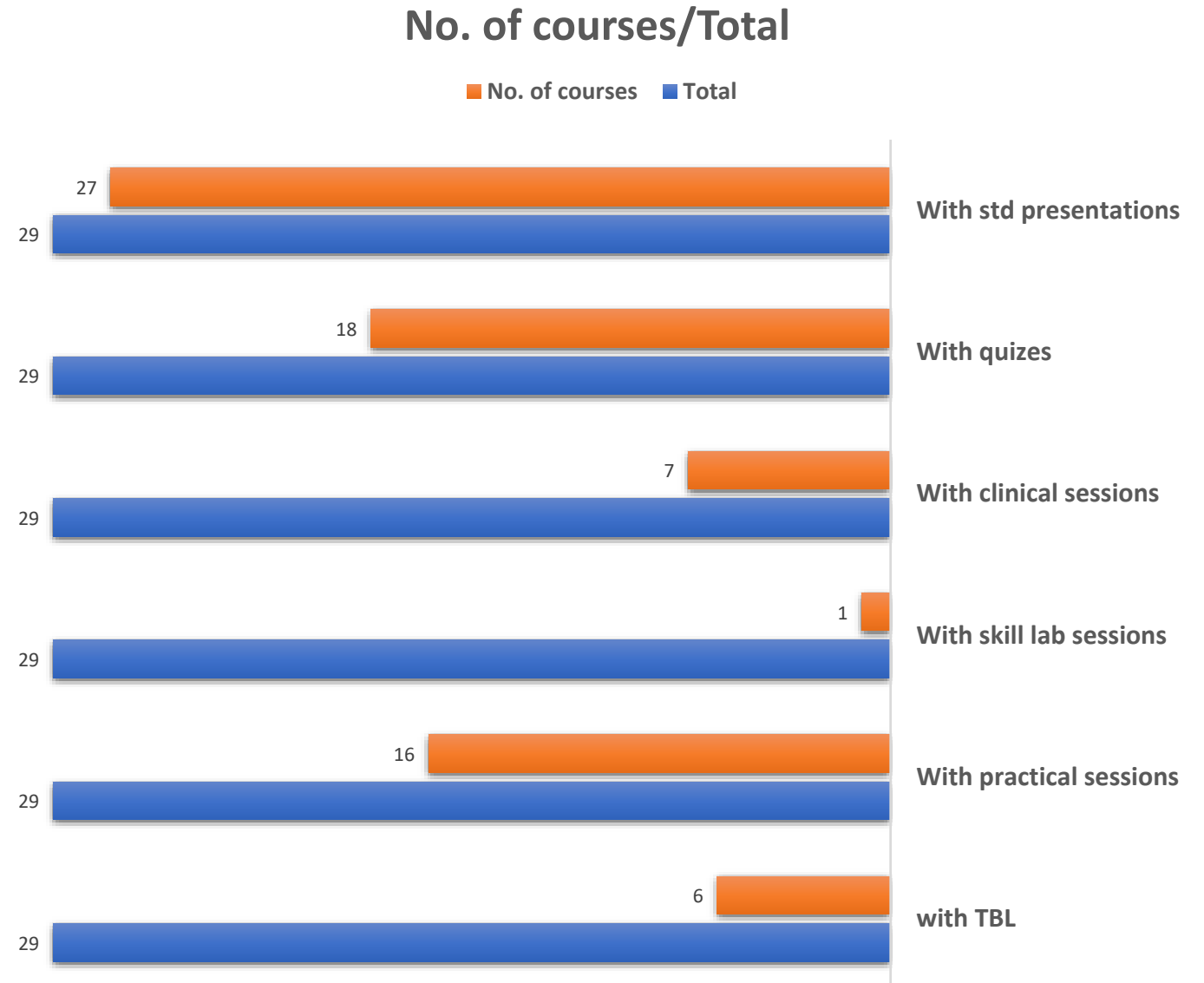
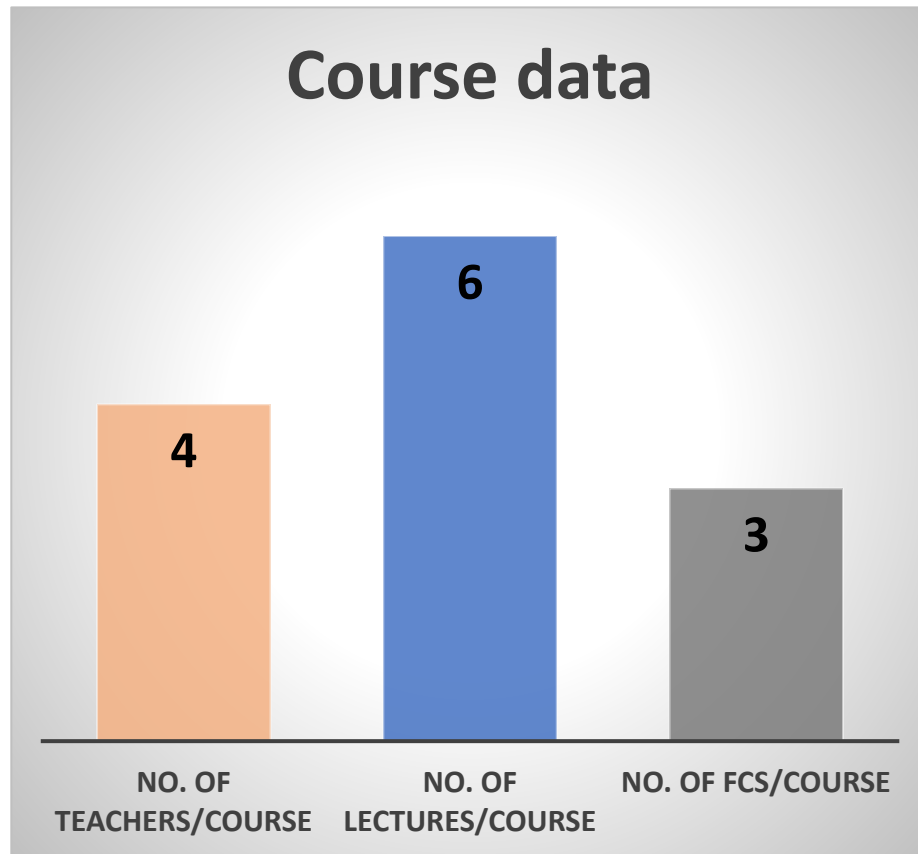
MEAN NO. OF ENROLLED
STUDENTS

student contact
23%



Online sessions
77%

Course data



Academic Writing	Dr. Amira Taman	Parasitology
Basics of Molecular Biology	Dr. Randa El-Gamal	Medical Biochemistry
Drawing of the Human Body	Prof. Mona El-Shahat	Anatomy
History of Medicine	Dr. Rehab Mhanna	Forensic medicine
Migratory (cells and organs) and their impact on clinical practice	Dr. Hend Hassan	Anatomy
People Management	Dr. Amira Taman	Parasitology
Precision Medicine and Pharmacological Innovation	Dr. Nehal Ramadan	Pharmacology
Scientific Method	Prof. Monir Bahgat	Gastroenterology & Hepatology
Traveller's Medicine: Review and Update	Prof. Raghda Farag	Tropical Medicine
Nosocomial-acquired parasitic infection	Prof. Samar Elbashbishy	Parasitology

Anatomic Pathology	Dr. Heba Salah	Pathology
Basics of Medical Education	Dr. Omnia Sameer	Medical education
Biochemical Aspect of Aging	Dr. Rehab Elsayed	Medical Biochemistry
Clinical Nutrition	Prof. Ghada El-Kannishy	Internal medicine
Complementary/Alternative Medicine (CAM)	Dr. Doaa Abdel Fattah	Pharmacology
Epidemiology of Diseases	Dr. Hend Magdy	Community Medicine
Exercise Physiology	Prof. Abdelaziz Hussein	Physiology
Mesenchymal Stem Cells	Dr. Mohammed El-Nablway	Medical Biochemistry
Neurobiology of Memory and Learning	Dr. Sara Elfarrash	Physiology
Nucleic Acids & Molecular	Dr. Heba Elshahawy	Clinical Pathology
Virology & Vaccination	Dr. Rasha Mokhtar	Microbiology

Phase 1 courses

Basics of Bariatric Surgery	Dr. Mohamed Abdelgawad	General Surgery
Basics of Sleep Medicine	Prof. Magda Abd El-Salam	Chest Medicine
Clinical Chemistry	Dr. Ghada Helal	Medical Biochemistry
First Aid in Medicine	Prof. Doaa Adbel Wahab	Forensic Medicine
GIT Endoscopy	Dr. Fatma Adel	Gastroenterology & Hepatology
Hematopoietic Stem Cell Transplantation and Cellular Therapy	Dr. Shaimaa El-Ashwah	Clinical Hematology
Immunology & Cancer	Prof. Amal Halim	Nuclear medicine
Interventional Cardiology	Dr. Mona Malek	Cardiovascular Medicine
Interventional Endoscopies in Chest Diseases	Dr. Ahmed Fouda	Chest Medicine
Laboratory & Radiological Interpretation of Major Endocrine Disorders	Dr. Hanan Abdel-Hay	Endocrine Medicine
Principles of Liver Transplantation	Dr. Ahmad Shehta	Digestive surgery
Screening, Early Detection & Diagnosis of Common Cancers	Dr. Hend Elkalla	Nuclear Medicine

Clinical Decision Making	Prof. Monir Bahgat	Gastroenterology & Hepatology
Infection Prevention & Patient Safety Measures	Prof. Dalia Moemen	Microbiology
Major Incident Medical Management; The practical approach in the hospital	Prof. Sahar Eldakroory	Forensic Medicine
Rheumatic Diseases in Childhood	Dr. Samar Tharwat	Rheumatology & Immunology
Reproduction & Infertility	Prof. Maher Shams	Obstetric & Gynecology
Art of spine surgery	Prof. Ashraf Shaker	Neurosurgery
Endocrine in Pregnancy	Dr. Hanan Abdel-Hay	Endocrine Medicine
Dialysis Modalities	Dr. Nehal Atef	Nephrology
Emergency in Oncology	Prof. Hanan Wahba	Nuclear Medicine
Immunological Diseases of the Eye	Prof. Maha Shahin	Ophthalmology
Sport nutrition	Dr. Mohammed El-Gamal	Forensic & Toxicology
Pediatric Orthopaedic Surgery	Prof. Mazen Abulsaad	Orthopedics
Phoniatic Disorders	Prof. Tamer Abulsaad	Phoniatrics
In vitro fertilization (IVF)	Prof. Maged Elshamy	Obstetrics & Gynaecology

Phase 2 Courses

Examples of the student Activities

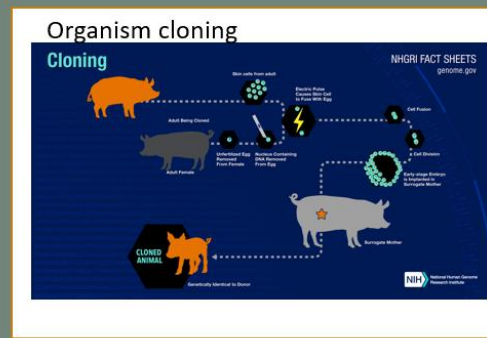
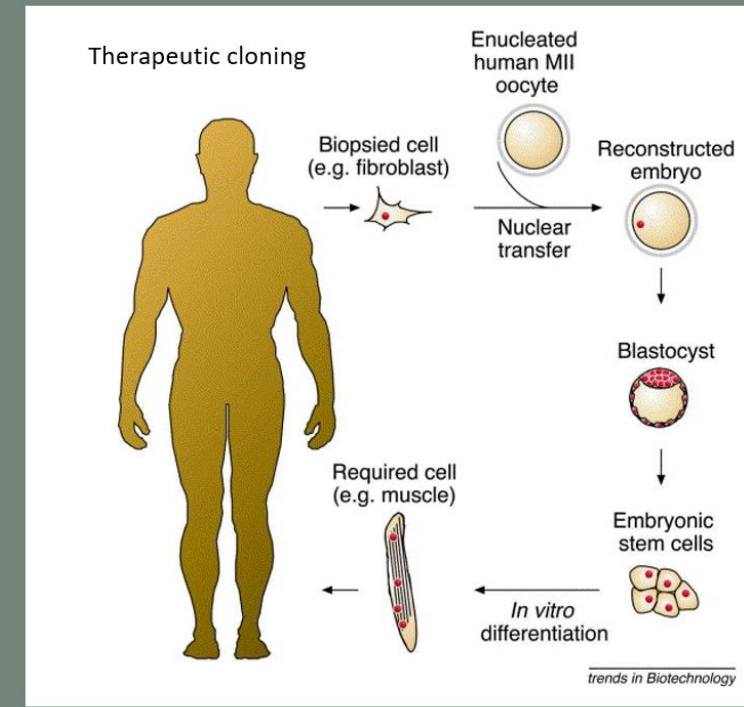
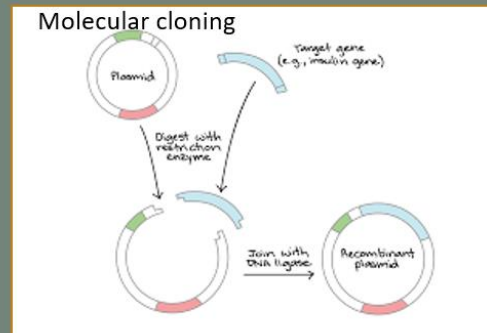
Definition of cloning :

- The process of generating a genetically identical copy of a cell or an organism. Each newly produced individual is a clone of the original. Thus cells from two clones have the same DNA and genes



Dolly and her surrogate mother

- Dolly (5 July 1996–14 February 2003) was female domestic sheep, and the first mammal cloned from adult somatic cell



Gene therapy products

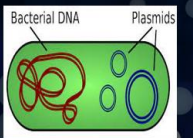

Plasmid DNA : Circular DNA molecules can be genetically engineered to carry therapeutic genes into human cells

Viral vectors : Viruses have a natural ability to deliver genetic material into cells

Bacterial vectors : Bacteria can be modified to prevent them from causing infectious disease

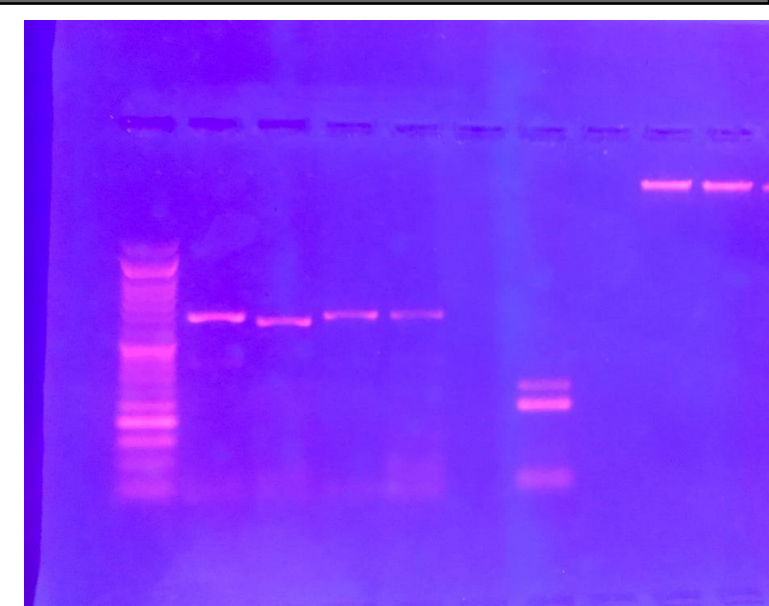
Human gene editing technology: The goals of gene editing is to disturb harmful genes or to repair mutated genes

Patient derived cellular gene therapy products : cells are removed from the patient, genetically modified and then returned to the patient.



Extraction of DNA from whole blood, simulation of PCR, then preparation of agarose gel electrophoresis & injection of the extracted DNA then visualization under ultraviolet transillumination

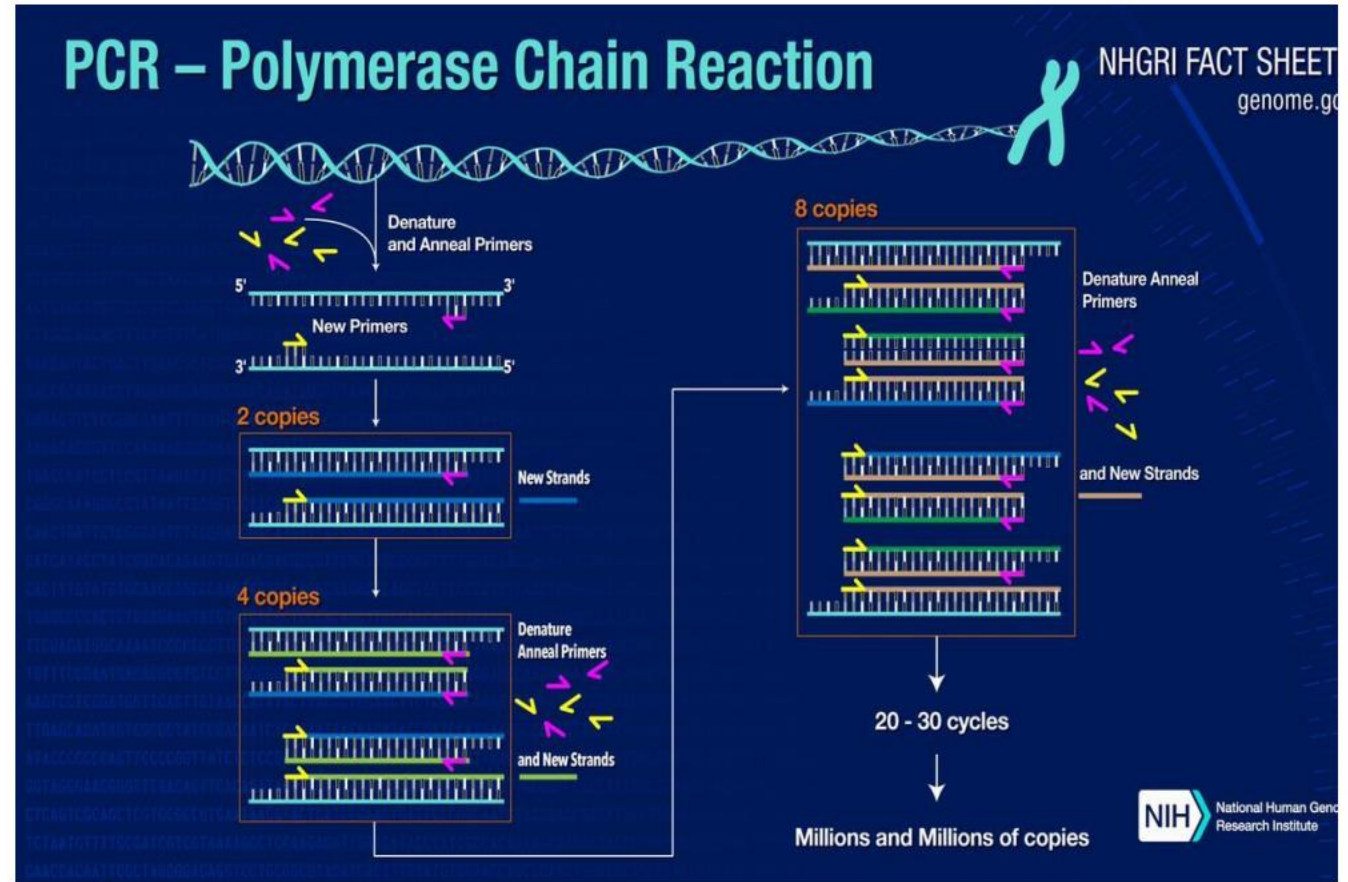




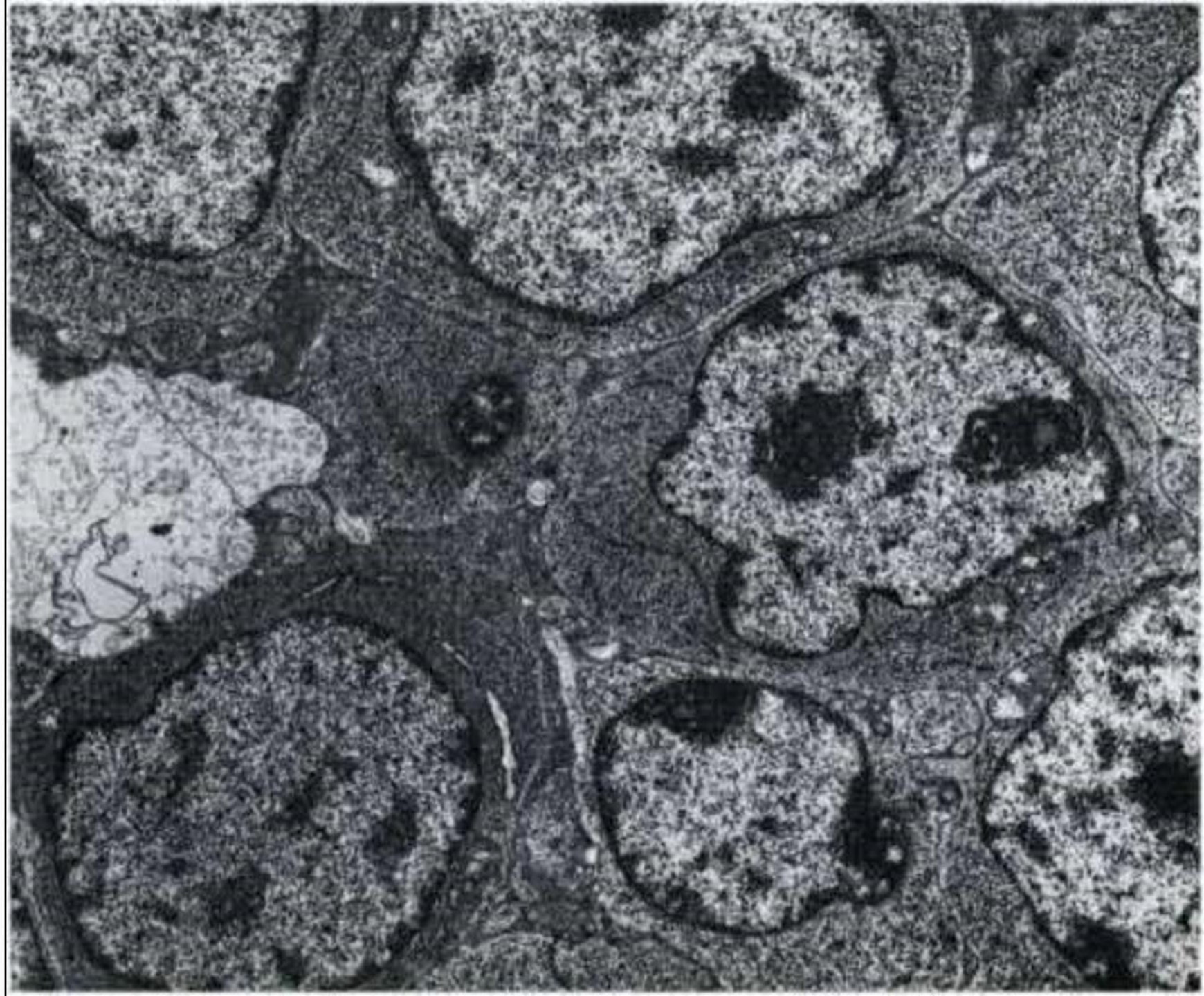
Isolation of rat bone marrow mesenchymal stem cells from femur and tibia

what is PCR test:

- A polymerase chain reaction (PCR) test is performed to detect genetic material from a specific organism, such as a virus. The test detects the presence of a virus if you are infected at the time of the test. The test could also detect fragments of virus even after you are no longer infected.



This image shows an Electron micrograph of a tumor involving the thyroid gland.



How to register on the Egyptian Knowledge Bank (EKB), How to find relevant literature



Are Wikipedia articles reliable learning sources especially for medical students?

Assignment 2 Article search and Referencing



Assignments 2:

From student # 1- to # 12 : Search Science Direct about "peptic ulcer" and select 3 articles then by using endnote write the 3 articles in a reference list using Vancouver Style

From student # 13- to # 23: Search PubMed about "Diabetes Mellitus" and select 3 articles then by using endnote write the 3 articles in a reference list using Harvard Style

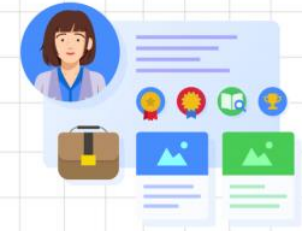
Logbook and Portfolio

On the basis of the medium used to record the portfolios, they can be divided into:



The contents of portfolio are recorded on papers.

Paper-based portfolios



The content can be recorded electronically in computer-based tools.

Electronic portfolios (e-portfolios)

Table of Contents

01 Introduction

04 Advantages & Disadvantages

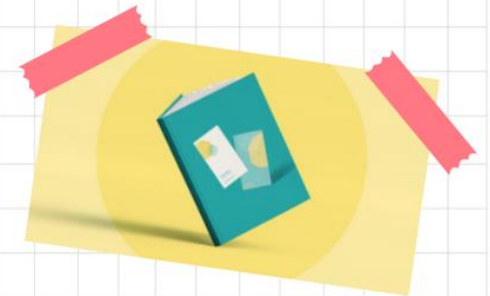
03 Examples of Logbooks

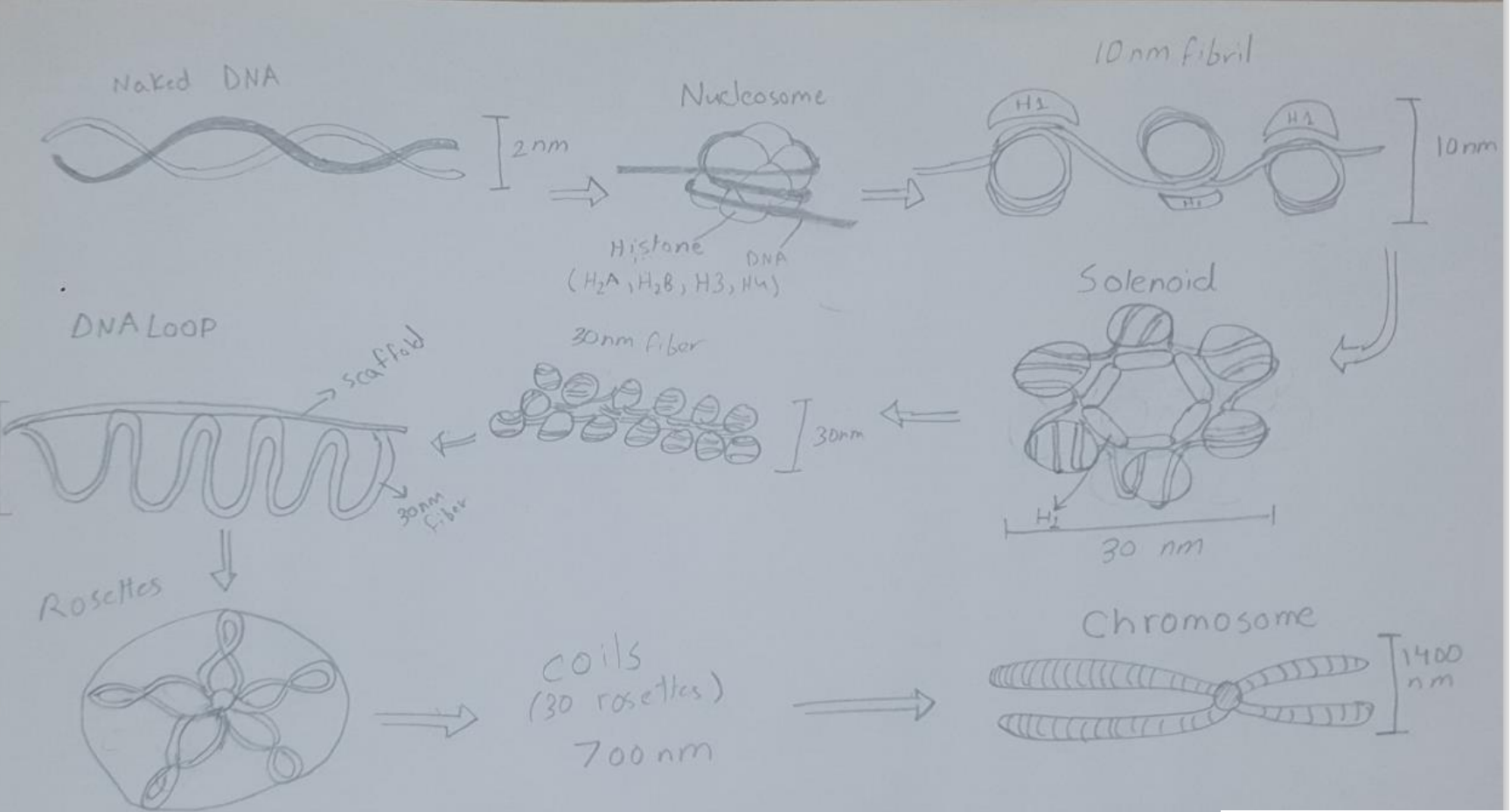
02 Types of Portfolios

05 Conclusions

Logbook

Log books are normally used over a short time period, e.g. during a course. Log books can also be divided into levels: the group log book, available for peers and teachers, and the individual log book, available only for teachers.



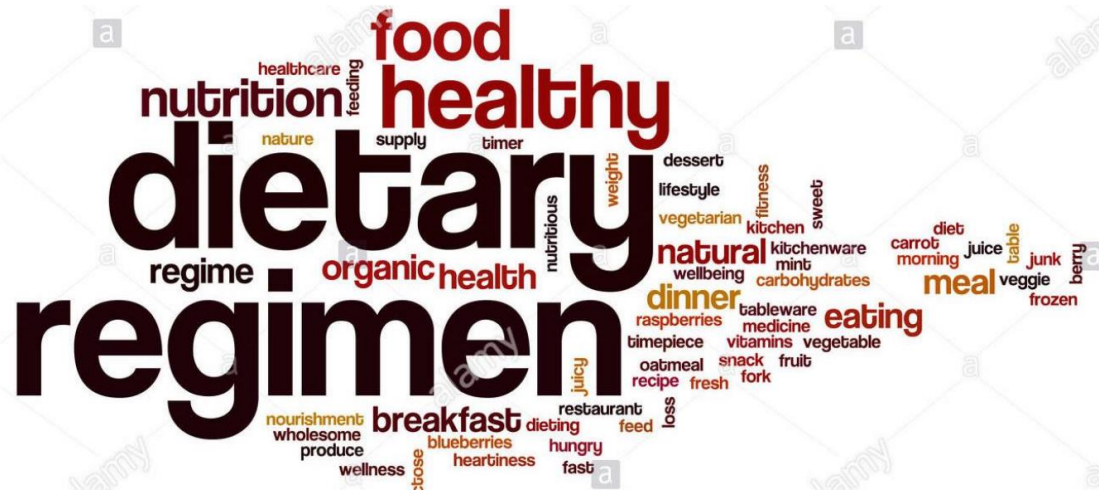


Assignment 1

In your own drawing, draw a diagram explaining DNA organization.

Then upload on Moodle under the title of our course.

Deadline: Saturday 1st May 2021



Tips For Healthy Aging

By Kareem Ahmed Mohamed

2nd assignment

antioxidant and skin aging

individual assignment

pdf included (types of skin aging, clinical sign of skin aging, antioxidant medication)

Aging is a phenomenon that occurs for everyone, yet it affects people differently. Some people seemingly grow older faster than others, experiencing the harmful effects of aging.

Design a herb flyer..

Tic tic tic tic 🕒🕒🕒🕒

It is time to start preparing your first assignment..

Use the attached design to prepare a herb flyer..

Items to be included are..

- An image for the selected herb
- Where herb commonly grows
- Main medical applications
- Main reported side effects or drug interactions
- References..

Aloe vera

What is aloe vera juice?

- The [aloe vera](#) plant is a succulent plant species from the genus *Aloe*. It grows abundantly in tropical climates and has been used for centuries as a medicinal plant.



What are the health benefits of drinking aloe vera juice?

Here are eight reasons to drink pure, uncolored, low anthraquinone aloe vera juice.

1. Hydration

Interpret a relevant clinical trial

Time for your second assignment.. 😎😎😎😎

Interpretation of a relevant clinical trial..

Time passed so quickly and we are about to say.. was nice to meet you all.. even if it was an a virtual basis..

This is a group-based assignment..

Five- to six- students subgroups will interpret a clinical trial relevant to the use and effectiveness (if any) of one of CAM modalities in either cancer patients.. patients with chronic rheumatic pain.. diabetics..

Use the attached checklist to cover items needed for skillful interpretation of the given clinical trial..



Yoga, Physical Therapy, or
Education for Chronic Low Back
Pain. A Randomized
Noninferiority Trial.

Tahira Jassim Ahmed Jassim
Ayman Mohammed El-wakeel
Aya Abedlmonem El-hesy

A Randomized Phase II Clinical Trial of Acupuncture Plus Standard Care Versus Standard Care Alone for Chemotherapy- Induced Peripheral Neuropathy (CIPN)

second assignment

Dear students

How are you

Second assignment needed for the course

design chart application of chain of infection on COVID 19 PANDE

PROGRAM DESIGN FOR PREVENTION AND

**PROGRAM DESIGN FOR PREVENTION AND CONTROL
LINES APPLIED ON COVID 19 PANDEMIC:**

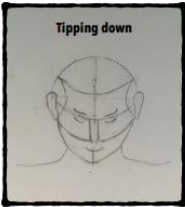


Proportions of the human body

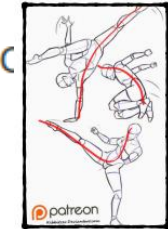
1. Draw a human figure that demonstrates accurate proportions of the figure
2. Make your next drawing double the size of your first picture, while maintaining the proportions
3. Repeat the two steps above with a front view of a human head



(1)



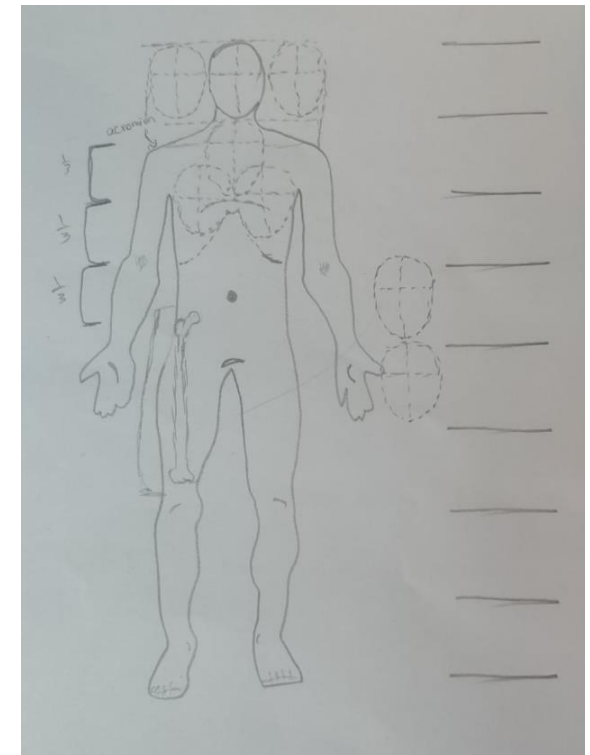
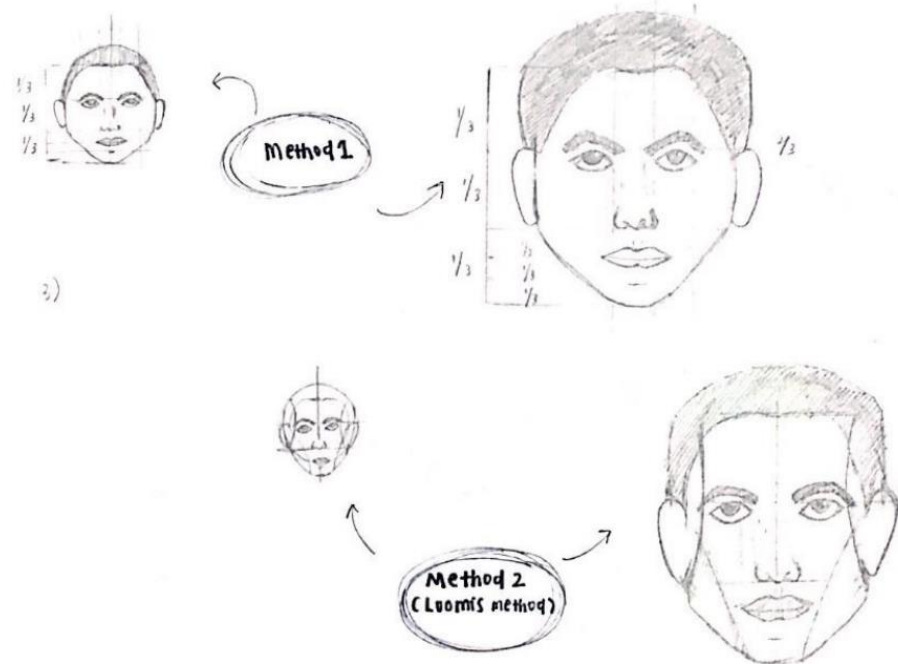
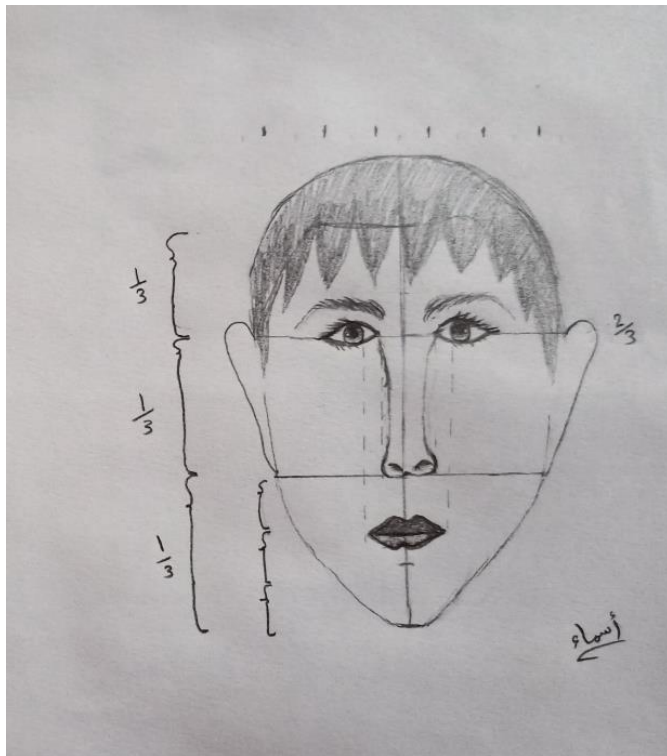
(2)



(4)



(3)



A real trial made from A to Z by the students on their own data

Sex Differences of CVS Responses to Acute Muscle Exercise

By

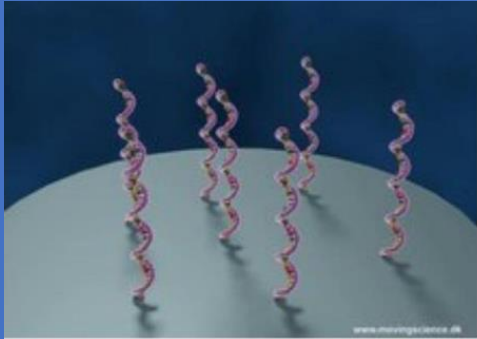
Omar Waleed, Paula Bassem, Rabab bnt Maatook, Hamza Bilal, Omar Mohamed, Ahmed Alaa, Ali Abdulameer, Osama Riyad, Abdelrahman el masry, Ebtihal Radwan, Hawraa Gabr, Ghadeer Yasser, Ahmed Osama, Ahmed Hamza, Dalia Shalby, Reem Ali, Naim Marsus, Muhammad Adib, Jana Fadil

From

Mansoura Manchester Program of Medical Education, Mansoura Faculty of Medicine, Mansoura, Egypt

Abstract

Aim of study: to identify the effect exercise has on our cardiovascular system, as well as also finding out whether gender plays a role in these effects or not. **Methods:** the vital signs of 11 males and 6 females were recorded, which included their heart rate, blood pressure, body temperature and oxygen saturation. This was done before and after a light exercise was carried out for 20 minutes. Differences in these vital signs were measured and observed. **Conclusions:** Although the results showed the expected effects exercise had on the cardiovascular system barring oxygen saturation levels, they did not show a significant effect exercise when comparing males and females.



Play media

How to use a microarray for genotyping. The video shows the process of extracting genotypes from a human spit sample using microarrays. Genotyping is a major use of DNA microarrays, but with some modifications they can also be used for other purposes such as measurement of gene expression and epigenetic markers.

DNA sequencing, microarray & blotting techniques

• Arab physicians seemed to have used drugs such as opium and hyoscyamus. Alcohol was often used but was probably more effective at making the patient easier to hold down than in relieving pain. Soporific sponges, involving the inhalation of drugs such as opium, mandragora and hyoscyamus were used from around the ninth century. However modern experiments with such sponges suggest they had no aesthetic effect at all. The use of soporific sponges was discontinued in the seventeenth century. It may well be due to the lack of effectiveness of pre-modern anaesthetics that their use was not widespread.



In the past various attempts were made to reduce or eliminate pain during surgical procedures. **Dioscorides**, a Greek physician in the early Roman Empire, used drugs such as henbane and mandrake root to relief pain. These drugs continued to be used into medieval times.



Discovery of Anesthesia

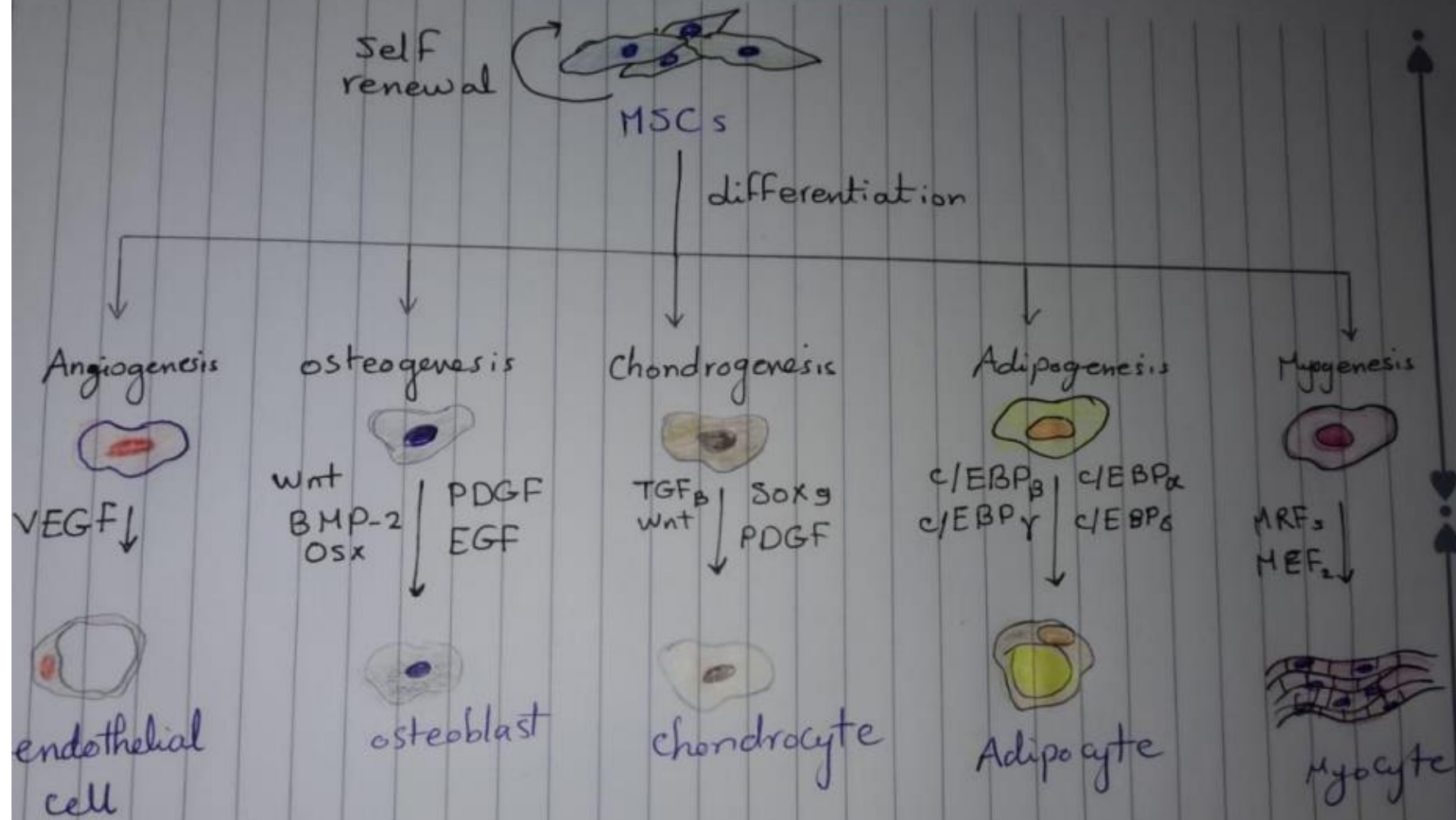
Done by :

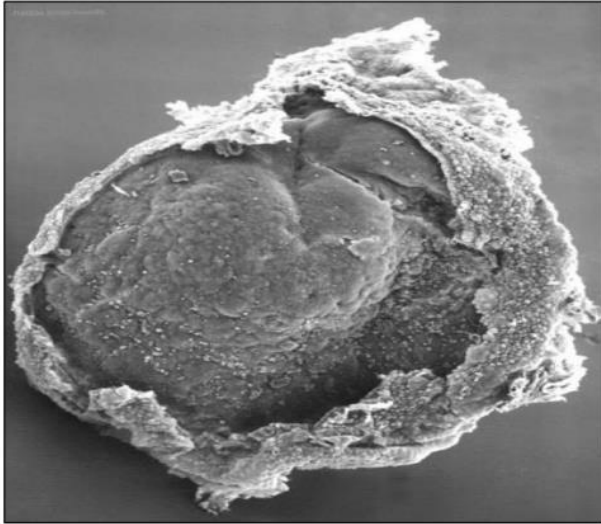
Kawthar Abdulaziz

Azhar Aljazeera

Ebrahim Alshareef

"Differentiation of MSCs"





PRIMORDIAL GERM CELLS

DEVELOPMENT, MIGRATION AND THE OUTCOME OF
DEFECTIVE MIGRATION

ABSTRACT

Human preimplantation developmental studies are difficult to accomplish due to associated ethical and moral issues. Preimplantation cells are rare and exist only in transient cell states. From a single cell, it is very challenging to analyse the origination of the heterogeneity and complexity inherent to the human body.

Prepared by: Group 2

NAME	I.D NUMBER
Hussain Ali Al Qalaf	190110201
Doha Othman Elzr	190110118
Nuha Ufaira Binti Suriani	190110159
Hady Adel Abd Rahman	200110132
Nada Gamal Mohammed	200110268
Abdullah Mohammed bin Abd	190110078
Yazan Hasan	200110201

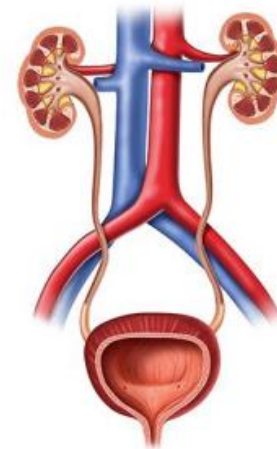
Defective migration of kidneys

Horseshoe Kidney

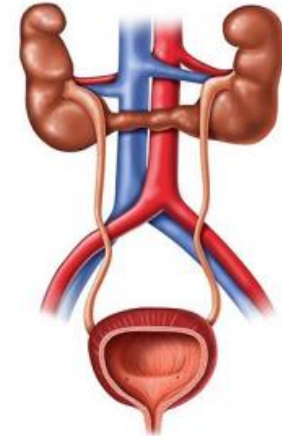
fusion of the lower poles of the kidney. During migration from the sacral region the two metanephric blastemas can come into contact, mainly at the lower pole.

The ureters pass in front of the zone of fusion of the kidneys.

Normal System



Horseshoe Kidney

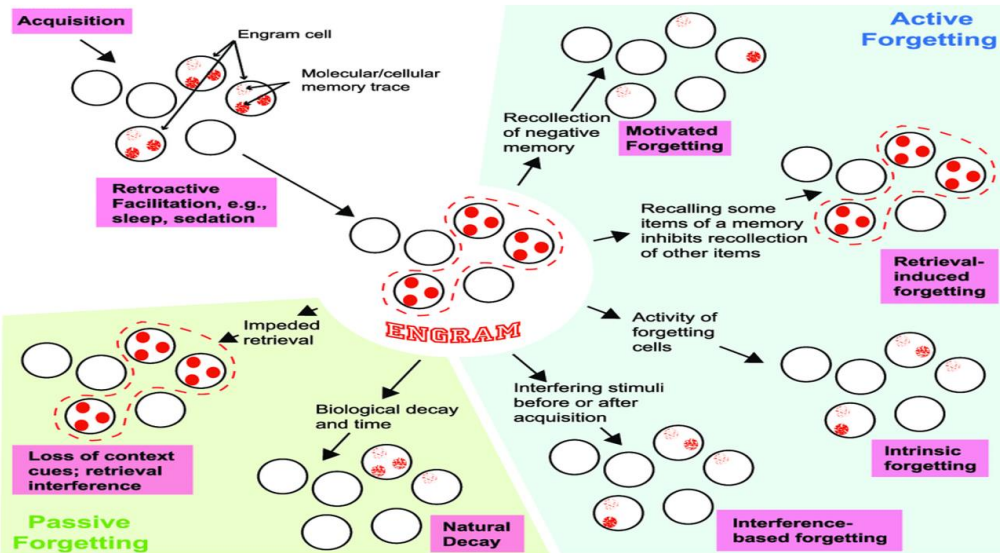


Loss of information from long-term memory.

Biological:
The function to slowly degrade molecular and cellular memory traces or engrams.



BIOLOGY OF FORGETTING



ILOS

Definition

Mechanisms of forgetting

Ways to keep your memory sharp

Active and passive forgetting

Balance between Acquisition/Consolidation Forces and Forgetting

Name : Mohamed Ahmed othman





Activity:


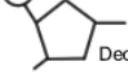
Construct a DNA Model


Instructions

1. Cut out each of the nucleotides (used the dash lines as a guide) and arrange them on the grid. Remember the **Base-Pair Rule**. (You will have one set left over). Separate paper may also be used.
2. In order to match the pairs, one of the nucleotides must be arranged upside down. This is intended. The sides of the DNA double helix are arranged in an **anti-parallel** fashion. Think of them like lanes on a highway going different directions.
3. Color each of the nucleotides

Key

 Adenine	 Cytosine
 Thymine	 Guanine

 Phosphate
 Deoxyribose



LEADERSHIP TRAIT QUESTIONNAIRE (LTQ)

Instructions

The purpose of this questionnaire is to measure your personal characteristics of leadership. The questionnaire should be completed by you (the leader) and five people who are familiar with you. Make five copies of this questionnaire. This questionnaire should be completed by you and five people you know (e.g. co-workers, relatives, friends etc.).

Using the following scale, have each individual indicate the degree to which they agree or disagree with each of the fourteen statements below. Do not forget to complete one for yourself.

Ahmed Yasser Gomaa

(Leader's name) is:

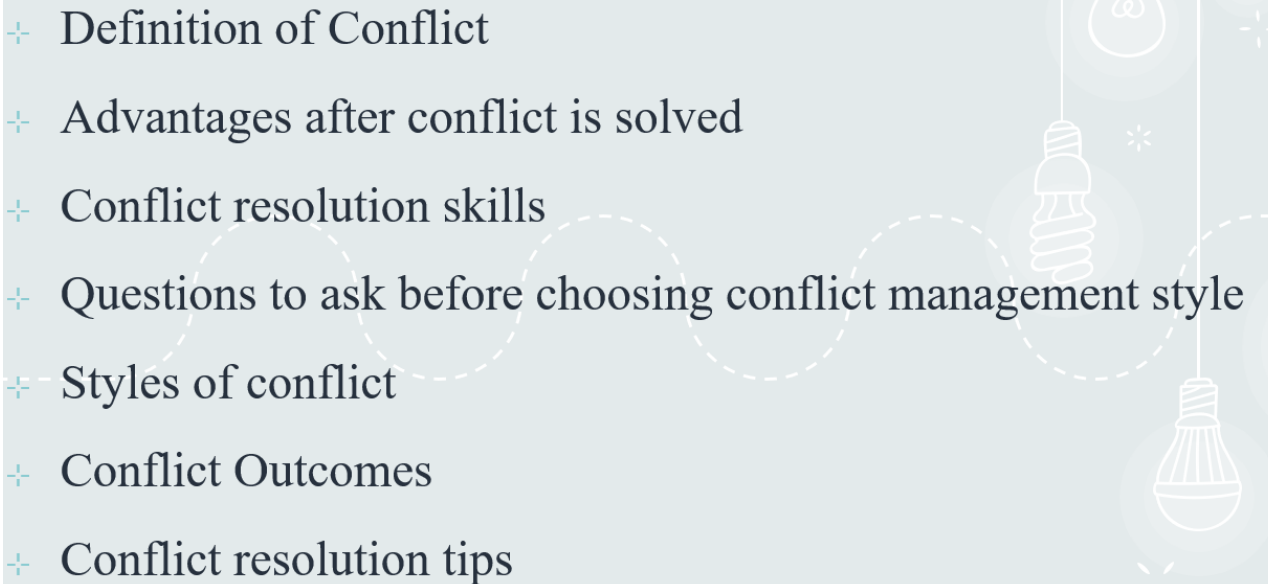
Remember: 1=strongly disagree, 2=disagree, 3=neutral, 4=agree, 5=strongly agree

1	Articulate: Communicates effectively with others	1	2	3	4	5
2	Perceptive: Is discerning and insightful	1	2	3	4	5
3	Self-confident: Believes in himself/herself and his/her ability	1	2	3	4	5
4	Self-assured: Is secure with self, free of doubts	1	2	3	4	5
5	Persistent: Stays fixed on the goals, despite interference	1	2	3	4	5
6	Determined: Takes a firm stand, acts with certainty	1	2	3	4	5



Conflict Resolution

ILOS:

- + Definition of Conflict
 - + Advantages after conflict is solved
 - + Conflict resolution skills
 - + Questions to ask before choosing conflict management style
 - + Styles of conflict
 - + Conflict Outcomes
 - + Conflict resolution tips
- 



Trastuzumab

Prepared by :

- i. Omar ahmed
- ii. Elsayed
- iii. Osama
- iv. Asmaa nasir
- v. Fatima

Supervised by

**Dr: Nehal
Ramadan**

Participants:

Eligible patients were adults with (ECOG) performance status of 0 or 1 and centrally confirmed measurable HER2 positive breast cancer, previously treated with trastuzumab and/or taxane

Settings and locations of data collection:

Data were collected at 68 centers from nine countries across (Asia, Australia, North America and western Europe)

Interventions:

Participants were randomly assigned (2:1) either trastuzumab emtansine (3-6mg/kg) plus atezolizumab (1200mg) or trastuzumab emtansine plus placebo

How: By intravenous infusion

When: Every 3 weeks

Objectives:

The addition of atezolizumab to trastuzumab emtansine might potentiate anti-cancer immunity and enhance HER2 targeted cytotoxic activity of trastuzumab emtansine

The aim is to test this combination in HER2 positive advanced breast cancer that had progressed after previous treatment with trastuzumab emtansine and taxane

Abstract

Randomised, double-blind trial

Introduction

Patients with HER2-positive breast cancer are treated by trastuzumab plus taxane, but they have a median overall survival of 37%. Despite these results, malignant diseases are still incurable and new treatments are needed. So, phase 2 is designed to investigate the efficacy and safety of atezolizumab plus trastuzumab emtansine in patients with HER2-positive. Atezolizumab is an engineered monoclonal antibody that inhibits the binding of PD-L1 to its receptor PD-1 and B7-1.

-Influence of Ancient Egyptian in scientific method:

Ancient surgical methods were documented in the Edwin Smith papyrus a manuscript bought by an Egyptologist, Edwin Smith in 1862 in Egypt as it is the world's earliest known medical document.

-Example: Imhotep is the founder of Egyptian medicine: He is the original author of the Edwin Smith papyrus.

- Impact of the role of Greek civilization in

scientific method: Plato believed that knowledge came from conversation and methodical questioning while, Aristotle believed that knowledge came from one's sensory experience.

-Example: Plato and Aristotle supported deductive reasoning, only Aristotle supported inductive reasoning.

3. William of Ockham (1285 – 1349):

-An English logician. He introduced the principle of parsimony which is now known as the Ockham's Razor (Occam's Razor) which states that an explanation or a theory should be as simple as possible and contains just enough terms to explain the facts.

-The Term Razor means that unnecessary assumptions need to be shaved away to get the simplest explanation, and is also stated as entities are not to be multiplied beyond necessity. It parallels what Einstein wrote in the 20th century (Theories should be as simple as possible, but not simpler)

Traveler's medicine


Assignment 3: planning a trip to Nigeria

Dear Travel Medicine course students, we are about to finish our course and this is the last assignment.

One of your friend decide to attend Africa cup final match in Nigeria next month, with the help of scientific data in recorded lecture and wwwnc.cdc.gov web site (search by destination), plan for this trip.

Upload your assignment as a PDF file on the moodle by Saturday, 5 June 2021 at 10 pm, this will be discussed in the second Saturday session from 1pm:2 pm isa.

Good Luck

A hand in a dark suit sleeve is shown from the bottom right, holding a glowing lightbulb. The lightbulb is rendered in a sketchy, white line-art style and is surrounded by a complex network of white lines and nodes, some of which are glowing with a bright blue light. The background is a dark blue gradient. In the top left corner, there is a small orange horizontal bar.

There is always
a place for you

Final Year clinical Training



Clinical Shadowing for 3-6 weeks in 1-2 specialties according to the student preference

As a wrap-up at the end of the module, students are responsible for reporting their tasks in a log-book and do some research work related to their Training

Clinical Shadowing for 3-6 weeks in 1-2 specialties according to the student preference

- Not more than 3 students with each tutor, supervisor**
- Can be in any department of Mansoura university hospitals, centers**
- Online booking system**
- Can be in any university, educational hospital elsewhere**
- Annual exchange grant with Manchester university**

98 طالب

الطلاب الذين قضوا أحد فترات التدريب الاكلينيكي خارج مصر

تم التدريب الاكلينيكي للطلاب بأقسام الكلية و مراكزها المختلفة (المستشفى الرئيسي- مركز الأورام- مركز العيون- مركز جراحة الجهاز الهضمي- مركز الكلي و المسالك)

51

المستشفيات الجامعية و التعليمية التي استقبلت طلابنا للتدريب الصيفي خارج مصر

ماليزيا (43)

مستشفى

المملكة المتحدة- إنجلترا (4)

جامعي و

المملكة العربية السعودية (1)

تعليمي

الإمارات العربية المتحدة (1)

الجزائر (1)

المكسيك (1)

68

أعضاء هيئة التدريس المشرفين علي كتابة و مراجعة الأبحاث

118

أعضاء هيئة التدريس المشرفين علي تحكيم و مناقشة الأبحاث

92	Hospital Shah Alam
93	Hospital Kajang
94	Hospital Selayang
95	Hospital Serdang
96	Hospital Sungai Buloh
100	Hospital Ampang
For further details check the Moodle link below http://lms.mans.edu.sg/lms/pluginfile.php/282986/mod_resource/content/1/Elective%20posting%20in%20Malaysia.pdf	
SAUDI ARABIA (N=11)	
1	Maternity And Children's Hospital Alhassa
2	King Abdulaziz Hospital – Hufouf
3	King Khalid University Hospital
4	King Faisal Specialist Hospital And Research Center
5	King Abdulaziz Medical City
6	Prince Sultan Military Medical City
7	Hospital Dawmat Al Jandal General Hospital
8	Dammam Central Hospital
9	Qatif Central Hospital
10	King Fahd University Hospital
11	Dallah Hospital
TURKEY (N=1)	
1	Fatih University, Istanbul
SOUTH KOREA (N=2)	
1	Asan Medical Center , Seoul
2	Seoul National University Hospital
GERMANY (N=2)	
1	Hospital Of The Ludwig-Maximilians-University, Munich
2	The University Medical Center Schleswig-Holstein, The University Of Lübeck
AUSTRALIA (N=1)	
1	Royal Perth Hospital
AUSTRIA (N=1)	
2	Medical University Of Graz
INDONESIA (N=2)	
1	Universitas Gadjah Mada, Yogyakarta
2	Hospital Universitas Gadjah Mada, Yogyakarta
INDIA (N=1)	
1	KLE Centenary Charitable Hospital

Guide list for International Elective Posting MMPME

UNITED KINGDOM (Manchester University) (N=4)	
1	Manchester Royal Infirmary
2	Salford Royal Foundation Trust
3	Royal Preston Hospital
4	Wythenshaw Hospital
For further details check the Moodle link below http://lms.mans.edu.sg/lms/pluginfile.php/283042/mod_resource/content/1/Guidebook%20for%20Elective%20posting%20in%20UK.pdf	
USA (N=3)	
1	Mount Sinai Medical Center in Miami, Florida
2	Aventura Hospital and Medical center in Miami , Florida
3	Surgical Partners Miami Beach , Florida
MALAYSIA (Divided by Districts) (N=100)	
Pahang	
1	Hospital Tengku Ampuan Afzan, Kuantan
2	Hospital Sultan Haji Ahmad Shah, Temerloh
3	Hospital Bentong
4	Hospital Pekan
5	Hospital Kuala Lipis
6	Hospital Raub
7	Hospital Jerantut
8	Hospital Jengka
9	Hospital Muadzam Shah
10	Hospital Cameron Highlands
11	Hospital Universiti Islam Antabangsa (UIA) Kuantan (IUMMC)
Johor	
12	Hospital Sultan Ismail
13	Hospital Temenggung Seri Maharaja Tun Ibrahim, Kulai
14	Hospital Pakar Sultanah Fatimah, Muar
15	Hospital Enche Besar Hajjah Kalsom, Kluang
16	Hospital Segamat
17	Hospital Pontian
18	Hospital Kota Tinggi
19	Hospital Mersing
20	Hospital Tangkak
21	Hospital Permai Johor Bahru, Tampoi
22	Hospital Sultanah Aminah, Johor Bahru

ALGERIA (N=2)	
1	CHU Batna
2	EPH Ain Touta
MEXICO (N=1)	
1	General hospital Dr Dario Fernandez
UAE (EMIRATES) (N=1)	
1	Rashid Hospital and Trauma Centre, Dubai Health Authority, Dubai
TOTAL NUMBER 132 INSTITUTES	

Head of the program

PROF

Ashraf Shoma

Phase Director

PROF

Ahmed Negm

Elective Module Chief Tutor

DR

Emad Magdy

Elective posting in Malaysia



GUIDE BOOK: ELECTIVE POSTING IN MALAYSIA

**FINAL YEAR MODULE FOR MANSOURA MANCHESTER
PROGRAMME FOR MEDICAL EDUCATION**

82-page guidebook with students experiences including all the Malaysian hospitals divided by districts

Another one is available for the UK hospitals, all the students experiences in the exchange program (starting from the application, all social issues and hospital feedbacks)



Wethershaw

(Cardiology, Plastic surgery, OBS & GYN)



Preston

(Emergency, Oncology)



Manchester Royal infirmary
(Emergency, ophthalmology,
Paediatrics, OBS & GYN)



Salford Royal

(Emergency, Neurosurgery, Gastroenterology, nephrology, Cardiology)



Foreign supervisors' comments and assessment reports

Direct contact through their institutional emails

It has been an absolute pleasure working [REDACTED]. She has a very quiet manner but was immediately commended by nursing and medical colleagues for her kindness and professionalism with patients and colleagues alike. She is extremely respectful and at times was pushed outside of her comfort zone in our Emergency Department but I feel that she handled this really well. She was constantly trying to learn and seek new learning experiences.

It has been an absolute pleasure working [REDACTED]. He is extremely professional in his approach and was extremely enthusiastic. In particular, he worked very well with his colleagues, ensuring that he was exposed to a broad selection of cases presenting to the Emergency Department.

It has been an absolute pleasure working [REDACTED]. She was extremely enthusiastic and worked very well with a colleague in ensuring that she was exposed to a broad selection of cases presenting to the Emergency Department. She reviewed patients independently and presented them to clinicians focusing especially on the development of management plans.

[REDACTED] is an excellent medical student who is keen on learning. He attended the majority of the departmental clinical activities (outpatient clinics and theatre lists) during his visit to

He actively participated in ward rounds and clinics observing and discussing learning points

I am not aware of any concerns from medical or nursing staff during his visit

As a wrap-up at the end of the module, students are responsible for doing some research work related to their Training

- Mainly- Reviews
- Case presentations, Case series
- Observational studies
- Examined for plagiarism
- Ranked at the end of the module, the best of them are offered a publication grant at MMJ
 - The last year, 10 papers accepted for publication

Our students' international publications



Review – Cancer Research | Published: 29 January 2021

Emerging role of exosomes and exosomal microRNA in cancer: pathophysiology and clinical potential

[Mohamed Ibrahim Elewaily](#)  & [Alyaa R. Elsergany](#)

Journal of Cancer Research and Clinical Oncology **147**, 637–648 (2021) | [Cite this article](#)

1084 Accesses | **4** Citations | **1** Altmetric | [Metrics](#)

Prevalence and predictors of thyroid cancer among thyroid nodules: a retrospective cohort study of 1,000 patients

SS Elbalka¹, IH Metwally¹, M Shetiwy¹, S Awny¹, O Hamdy¹, SZ Kotb¹, AM Shoman², E Shahda², IA Elzahaby¹

⊕ Affiliations

Keywords: Thyroid nodules, Goitre, Thyroid cancer, Fine-needle cytology, Thyroidectomy

Volume: 0 **Issue:** 0, -Not available-, primary_article

<https://doi.org/10.1308/rcsann.2021.0057>

Published online: August 27, 2021



Rami Elmorsi

Mansoura University Faculty of Medicine

Verified email at std.mans.edu.eg

Medicine Surgery Plastic

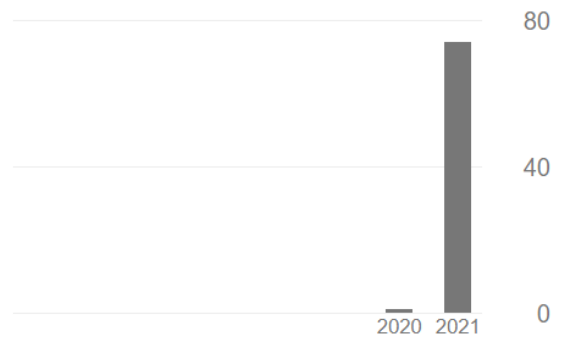
FOLLOW

GET MY OWN PROFILE

TITLE	CITED BY	YEAR
<p>Timing of surgery following SARS-CoV-2 infection: an international prospective cohort study COVIDSurg Collaborative, GlobalSurg Collaborative Anaesthesia 76 (6), 748-758</p>	68	2021
<p>SARS-CoV-2 vaccination modelling for safe surgery to save lives: data from an international prospective cohort study C Collaborative, GS Collaborative The British journal of surgery</p>	11	2021
<p>The therapeutic potential of targeting ACE2 in COVID-19 R Elmorsi European Review for Medical and Pharmacological Sciences 24 (18), 9744-9747</p>	1	2020
<p>PD24-07 IMPACT OF THE VIRTUAL INTERVIEW FORMAT ON UROLOGY RESIDENCY INTERVIEWS: A SURVEY OF PROGRAM DIRECTORS A Ferry, M Asaad, R Elmorsi, A Rajesh, R Maricevich The Journal of Urology 206 (Supplement 3), e428-e428</p>		2021
<p>The Virtual Interview Experience for MATCH 2021: A Pilot Survey of General Surgery Residency Program Directors A Rajesh, M Asaad, R Elmorsi, AM Ferry, RS Maricevich The American Surgeon, 00031348211038555</p>		2021

Cited by

	All	Since 2016
Citations	80	80
h-index	2	2
i10-index	2	2



Public access

[VIEW ALL](#)

0 articles

1 article

not available

available

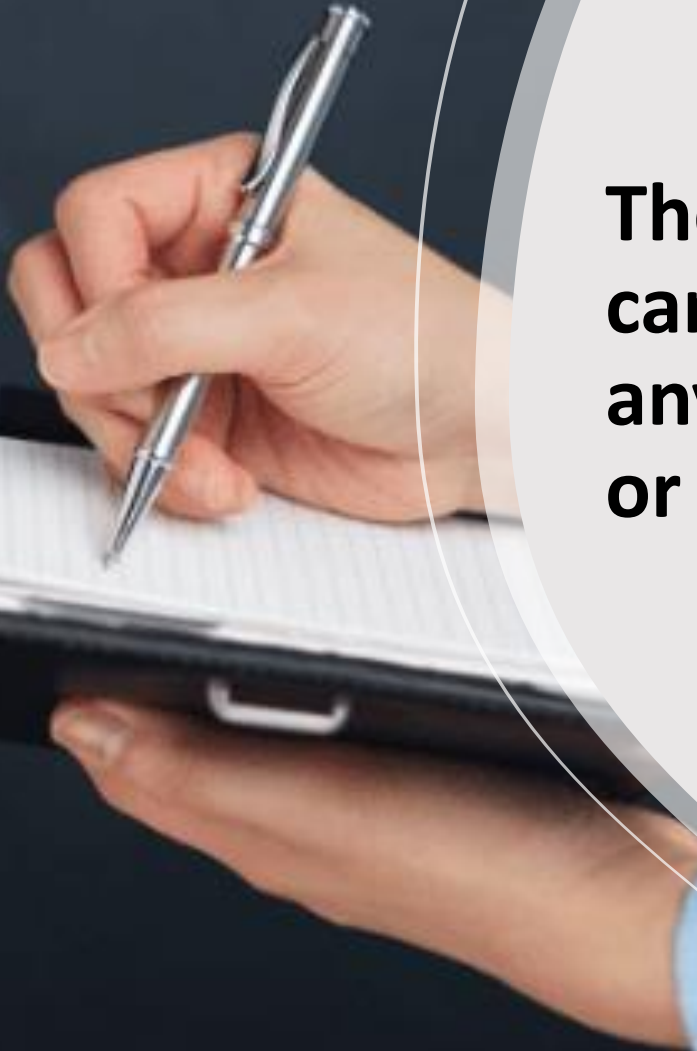
Based on funding mandates

LIST OF MMJ accepted papers

SER.	Student Name	Essay Title	Speciality	Supervisor Name
1.	Nourhan Mahmoud Mohamed Mahmoud Eldesoky	Myocardial Infarction in COVID-19 Era	Cardiology	Dr Moheb Magdy
2.	Farra Amelia Binti Shah Reza Huzzieni	Predictors of weight regain after bariatric surgery	Emergency Surgery	Dr Mohamed Moustafa
3.	Rawan Hisham Mohamed Rafik Issawi	Diabetes mellitus and thyroid disorders: Clinical association and its sequelae	Endocrinology	Dr Rania Bhriz
4.	Omar Ayman Azmy Mohamed Nafea Khafagy	Chimeric Antigen Receptor T-cell therapy for Acute Lymphoblastic Leukemia	Hematology	Dr Shaimaa El Ashwah
5.	Mahmoud Aktham Hussein Mohamed Mansour	Coronavirus disease 2019 and pregnancy	Obs. & Gyne.	Dr Mohamed Taman
6.	Alyaa Mohamed Elsayed Shohieb	Immunotherapy for thyroid eye disease	Ophthalmology	Dr Nashaat Shawky
7.	Firdaus Hakimi Bin Abdullah	Paediatric inflammatory multisystem syndrome temporally associated with SARS-CoV-2	Pediatrics	Dr Ahmed Darwish
8.	Amr Ahmed Youssef Ahmed Kandeel Elhaddad	Recent advances in imaging of acute ischemic stroke	Radiodiagnosis	Dr Mahitab Ghoniem
9.	Sara ElBayoumi Mohamed Abodabesh	Recent updates in management of borderline ovarian tumors	Surgical Oncology	Dr Khaled Gab Allah
10.	Sara Elzeki Elbaz Ibrahim Elbaz	Reconstruction of glossectomy defects post oncologic resection	Surgical Oncology	Dr Shady Awny



RESEARCH



They are starting their careers and will not forget anymore how you helped or taught them



- ❑ Annual 5 experimental research grants, 20000 L.E each, funded by MMPME
- ❑ In collaboration with MERC
- ❑ Offered to student teams including Manchester, integrated and conventional programs
- ❑ Any project should be under supervision of a faculty staff member

Annual Grants

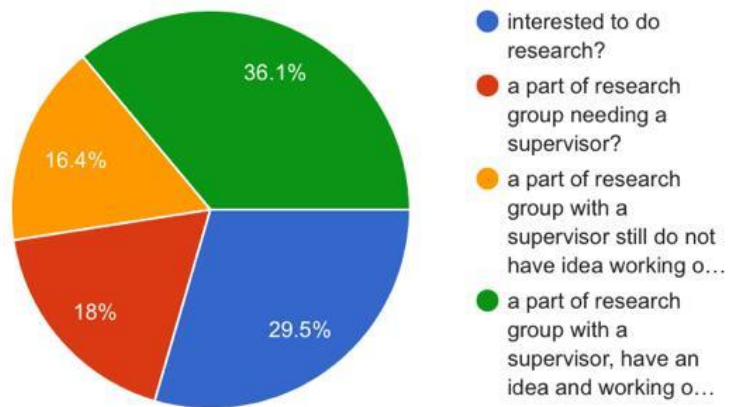




Student Research Society

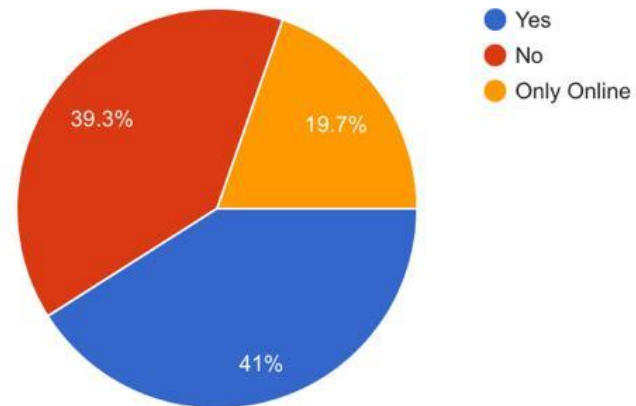
Are you

61 responses



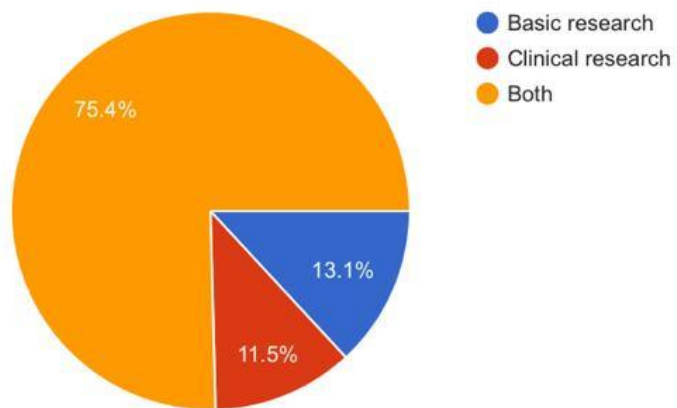
Did you do any courses that might help you in reseach?

61 responses



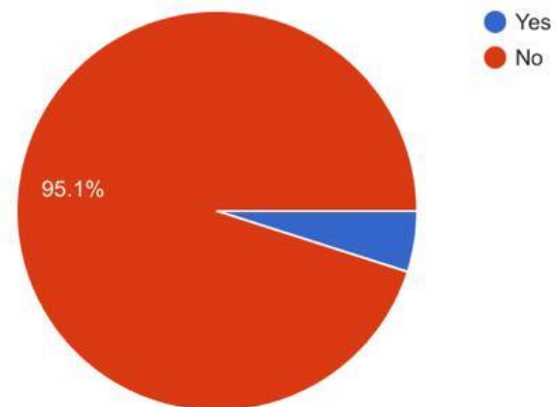
Are you interested in..?

61 responses



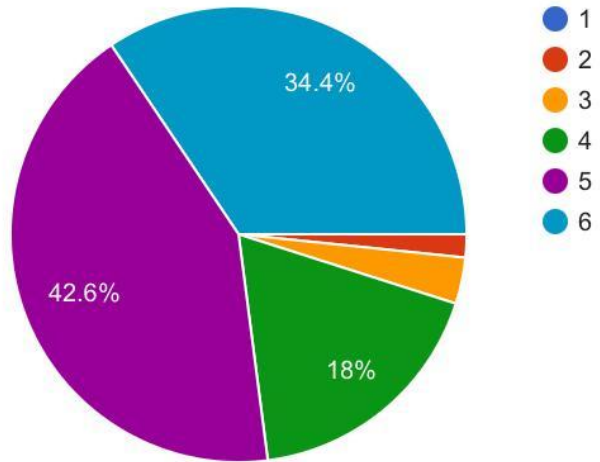
Have you published any work before?

61 responses



Academic Year (at Oct. 2020)

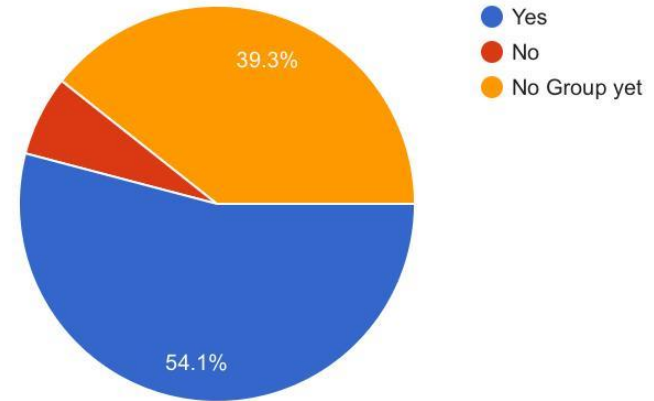
61 responses



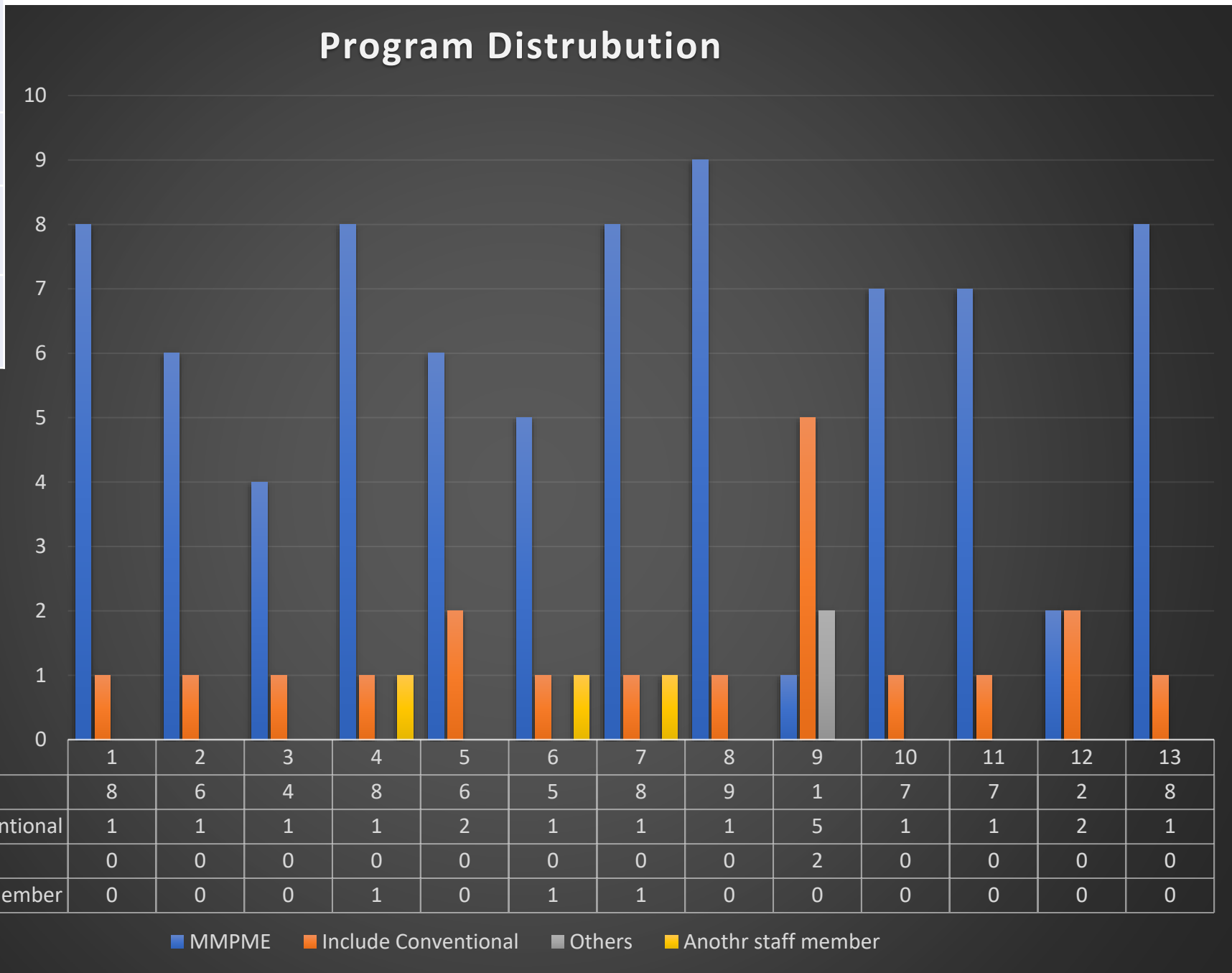
Does your group contain students outside the program (conventional- other faculties) ?



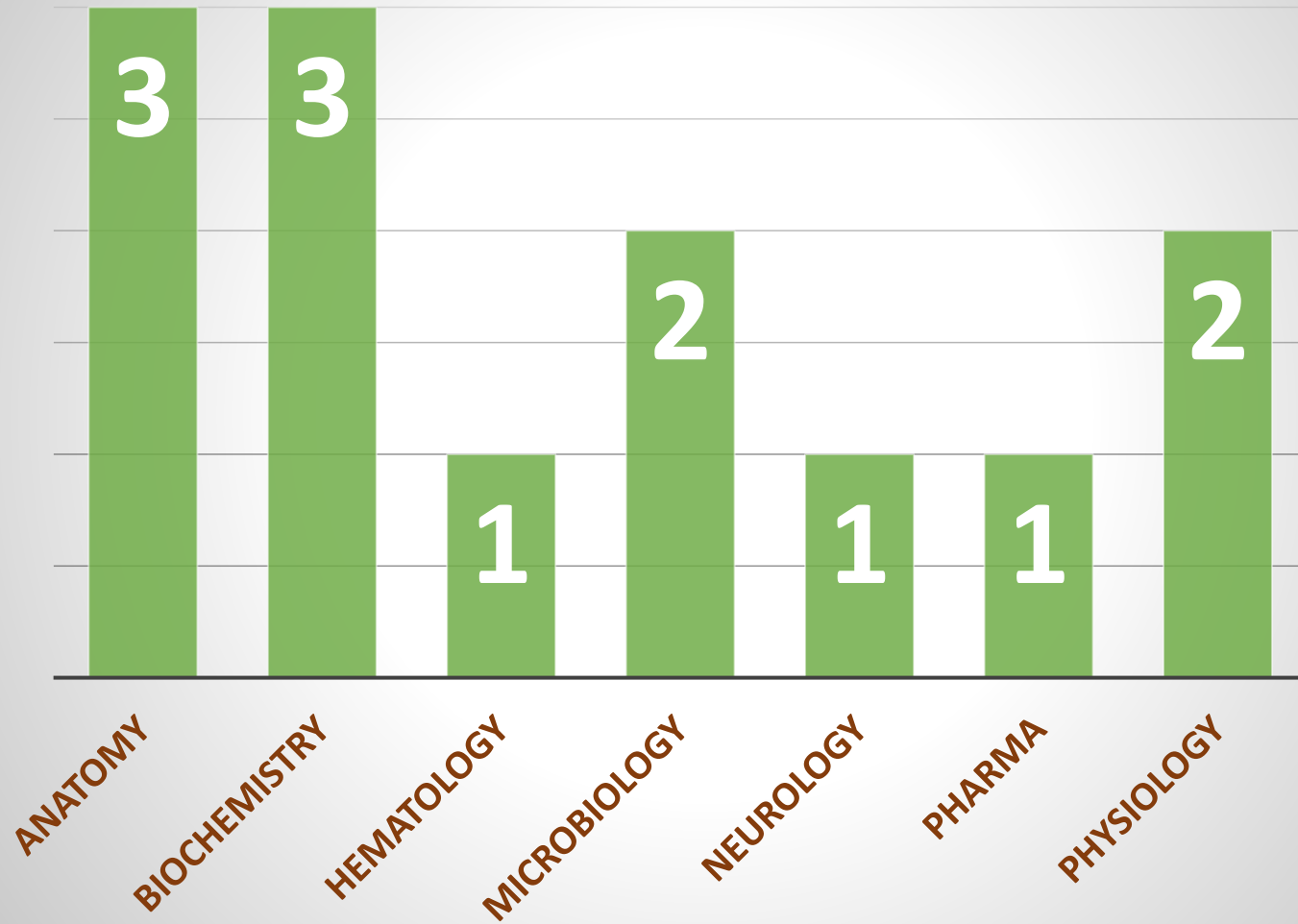
61 responses



MMPME	79 (3 non-Egyptians included)
Conventional	13
Total Faculty of Pharmacy	92
	2



Proposals (n=13)



Anatomy	3
Biochemistry	3
Hematology	1
Microbiology	2
Neurology	1
Pharma	1
Physiology	2



Proposals Evaluation

4 Steps

- 1- Aspect differentiation
- 2- Reviewer Report
- 3- MERK feasibility
- 4- Grant committee final decision



Include them in your research teams

Research Basics



- Types of data
- Basics of statistical analysis
- Different research designs
- Case reporting
- Poster presentations
- Evidence-Based medicine basics
- How to read and criticize a research paper
- Reviews- Systematic Reviews



Aknowledgment





Ass. Prof Ghada Helal



Dr Randa El Gamal



Dr. Nehal Ramadan



Dr Amany Abdel Fattah



Dr Hend Hassan



Dr Hanan Abdel Hay



Mrs. Dalia Ibrahim



Phase directors

Chief tutors

Electronic support Team

—

Thank You

Contact Me at

dremadshawky@mans.edu.eg

01278757828

